

MBT-WL129 : Installation guide

</en/advertising-systems/mbt-wl129/>

MBT-WL129 Front view



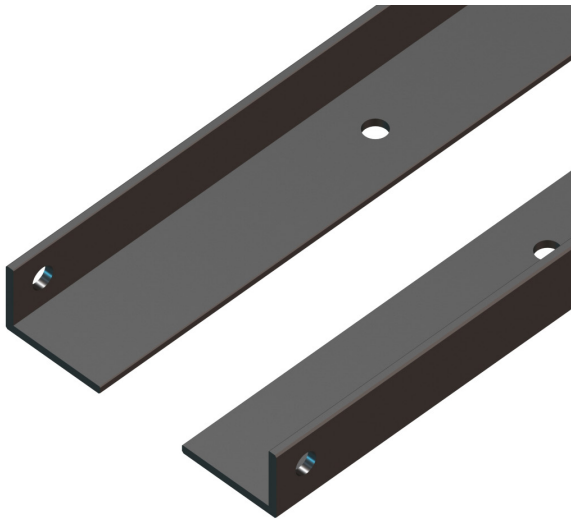
Security notice

We recommend to contract qualified professionals to install the advertising system. Please take all precautions to protect people, material and tools from accidents and damage.

MBT-WL129 : Installation guide

</en/advertising-systems/mbt-wl129/>

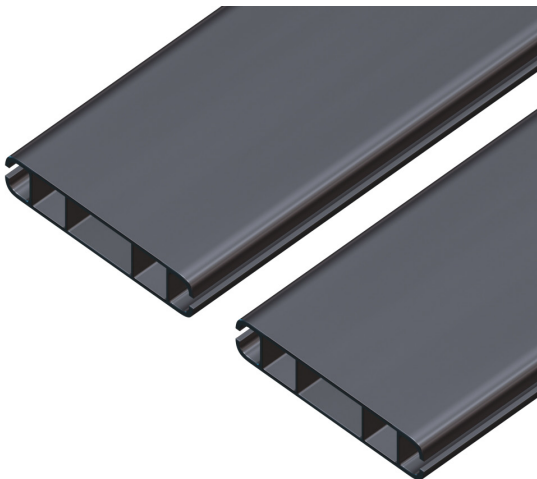
Components overview



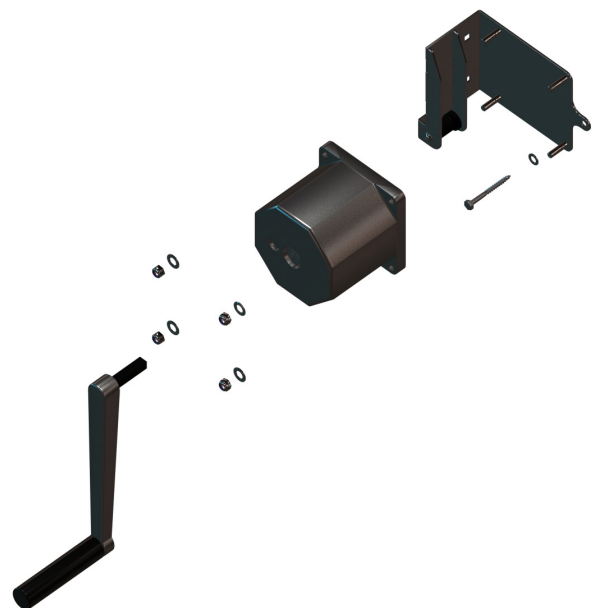
Wall mount angle



Guide profiles



Transverse profile

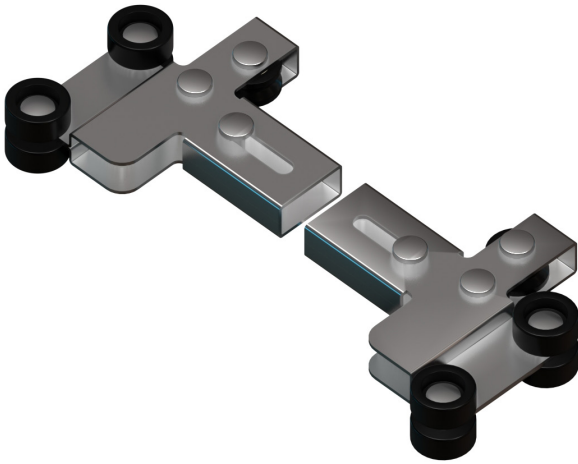


Winch system

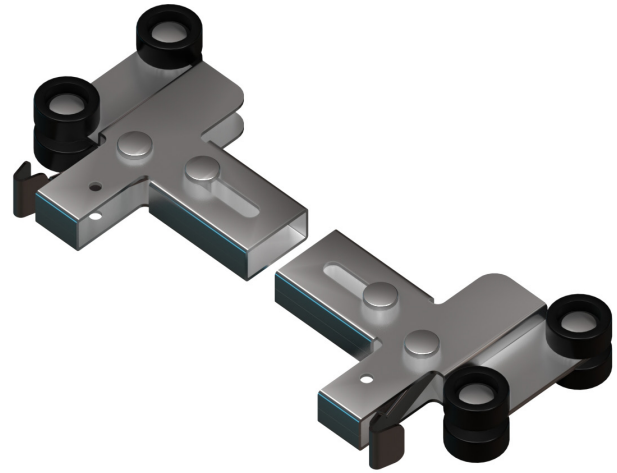
MBT-WL129 : Installation guide

</en/advertising-systems/mbt-wl129/>

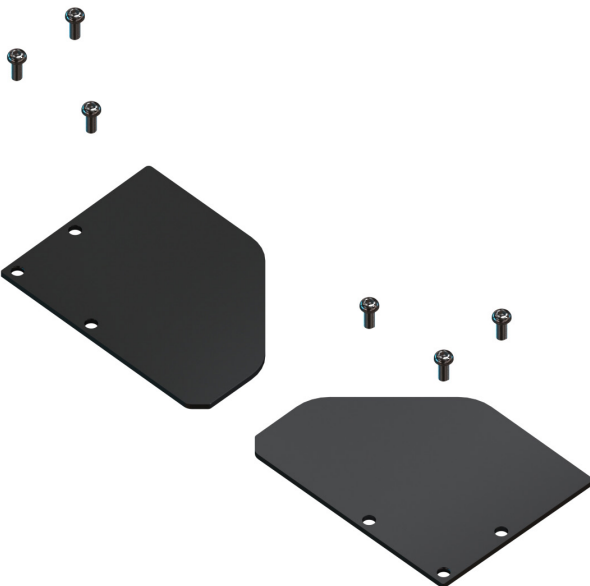
Components overview



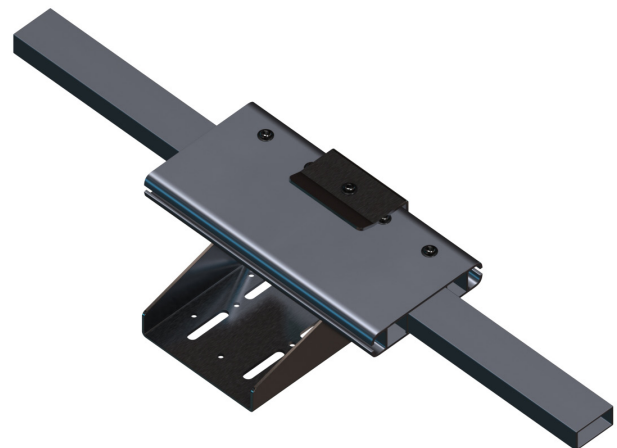
Carriage upper transverse profile



Carriage lower transverse profile



Guide profile covers



Center-console and stabilizer (system width > 5 m)

MBT-WL129 : Installation guide

</en/advertising-systems/mbt-wl129/>

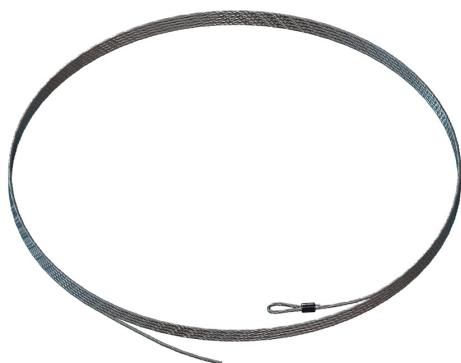
Components overview



Banner-carriages



Rubber bands



Stainless steel cable 3mm

Important notice

The elevation system must be used exclusively with the mounted banner.

The quantity of each component varies depending on the system size.

We add a part list with the corresponding quantities for each delivered system.

The system components are delivered in a pre-mounted state.

MBT-WL129 : Installation guide

</en/advertising-systems/mbt-wl129/>

Tools needed

- Folding rule
- Spirit level
- Pencil
- Drill
- Corresponding drill bits
- Ratchet and Nuts
- Wrenches
- Allen keys

Mounting material (stone walls)

- Dowels 10 mm
- Screws 8 x 70 mm
- Washers 8,4 mm

For other surfaces: Please ask us for suitable mounting material.

Assembly preparation

Lay the system out on the floor. Protect the components from damage such as scratches or the like.

To the right and left the guide profiles with the corresponding wall mount angles, above and below the transverse profiles. Put the steel cable, the crank unit and the slide-in slides in the correct places.

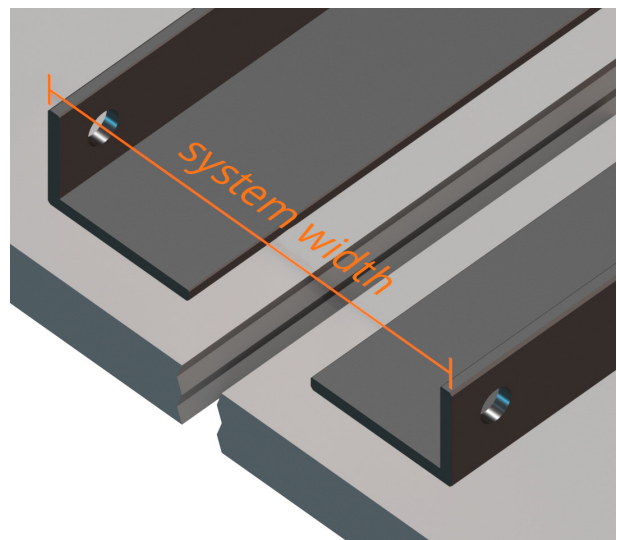
For systems bigger than 5 meters width,

place the center-stabilizer in the middle of the upper, two-parted transverse profile.

Important notice

Please start with the assembly as soon as you are clear about the mechanical functionality of the system.

1: Fixing wall mount angles



Move one of the wall brackets to the desired location on the mounting surface so that the short leg of the wall mount angle points towards the mounting surface.

Align them vertically with the spirit level and then mark all the drill holes with a pencil.

MBT-WL129 : Installation guide

</en/advertising-systems/mbt-wl129/>

Recommendation

To make your work easier, you can first mark the top hole, drill it and attach a dowel to it. Fasten the profile with a screw and washer so that the profile cannot fall off. Then mark all the other holes as described above.

Drill all the holes, provide them with dowels and then screw the wall brackets to the mounting surface with screws and washers. Occasionally correct the vertical alignment with the help of the spirit level during the process. Tighten all screws securely.

Comment

Extended wall mount angles must be continued vertically flush below and are attached in the same way.

Measure the distance according to the ordered total system width to the remaining wall bracket from the outer edge of the attached wall bracket and mark the outer edge on the opposite side with a pencil.

Fasten the remaining wall bracket in the same way as the previous one at the same height.

2: Mounting the guide profiles



Now screw the guide rails to the wall brackets on the wall using the screws, washers and lock nuts provided.

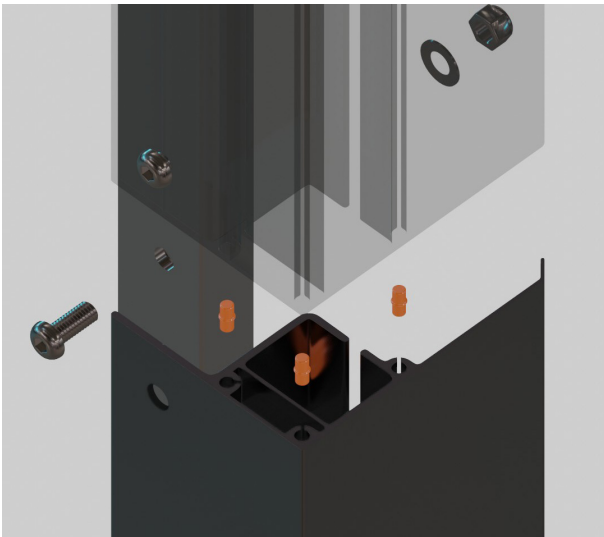
Important note

Some walls are not straight. Make sure to align the guide rails vertically as well as possible with the help of the spirit level so that the roller slides can move properly in the profile guide tunnels.

MBT-WL129 : Installation guide

</en/advertising-systems/mbt-wl129/>

2a: Systems with profile extensions



Profile extensions must be provided with the enclosed metal pins before screwing them to the wall brackets.

Each extension is then pushed together with the already attached profile rails so that the rails are flush with one another.

Screw the components together with the enclosed screws, washers and lock nuts.

3: Center stabilizer

In case your system is NOT bigger than 5 m in width, please continue with step 4.

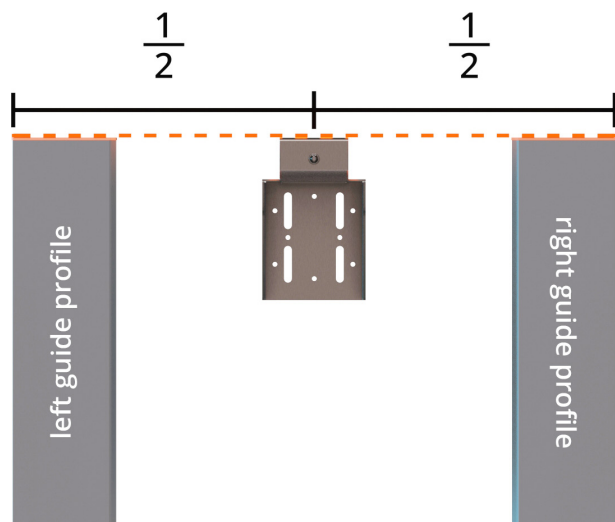
Definitions:

The center-console is the component that must be attached to the mounting surface.

The center-stabilizer is the component that has to be mounted centrally between the upper transvers profiles.

Together, both components make it easier to pull in the advertising banner and fix the upper transverse profile in its end position.

3a: Fixing the center-console



First, you need to attach the center console to the mounting surface.

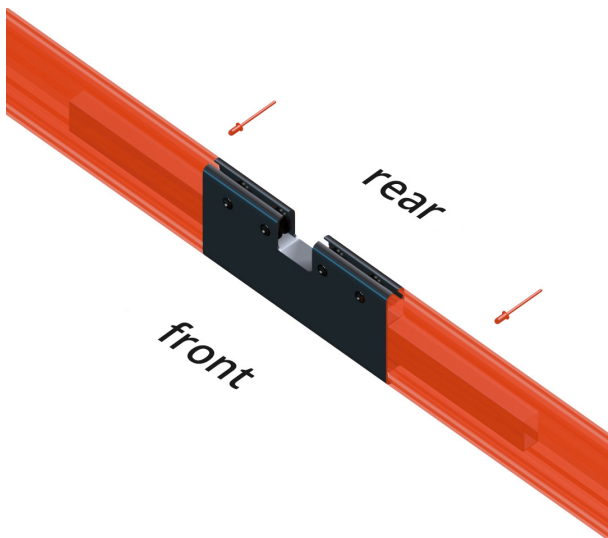
The center console must be located exactly in the middle between the outer edges of the system.

MBT-WL129 : Installation guide

</en/advertising-systems/mbt-wl129/>

The top edge of the center console is the same as the top edge of the system, including the fitted end covers of the guide rails.

3b: Prepare transverse profile

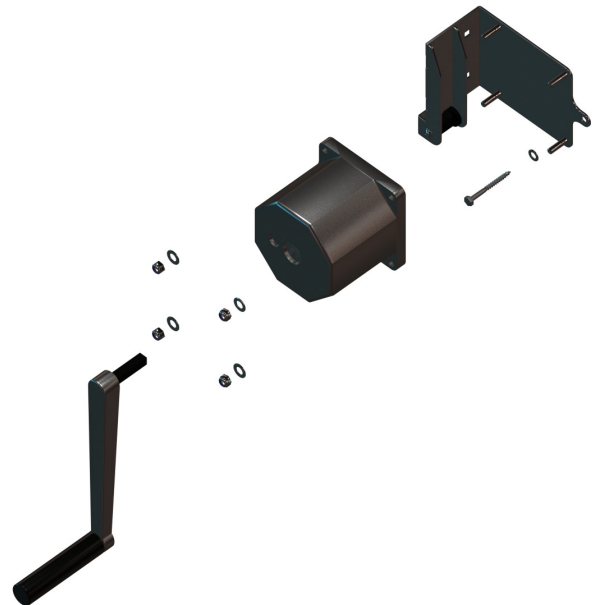


Slide the upper transverse profile parts on each side over the protruding square tube of the center-stabilizer so that the individual components are flush with one another.

The cross profiles and the square rail of the central stabilizer have prepared drill holes on their back.

Connect the components permanently with the rivets through the pre-drilled holes.

4: Mounting the winch system



Mount the winch support hand-tight on the prepared holes of the profile rail and mark the fixing hole on the wall, drill and provide it with a dowel.

Now attach the winch support to the wall with the screw and tighten all screw connections.

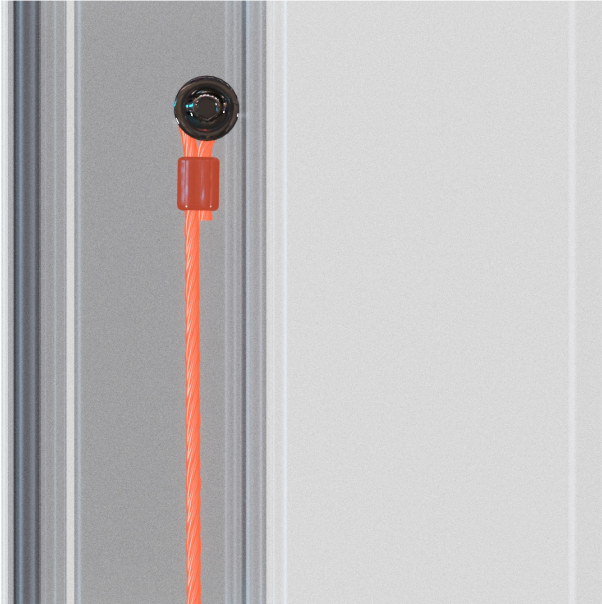
Place the winch system on the four screw pins of the winch support and secure it with the enclosed lock nuts and washers. Tighten the nuts securely.

Insert the crank into the holder provided for it.

MBT-WL129 : Installation guide

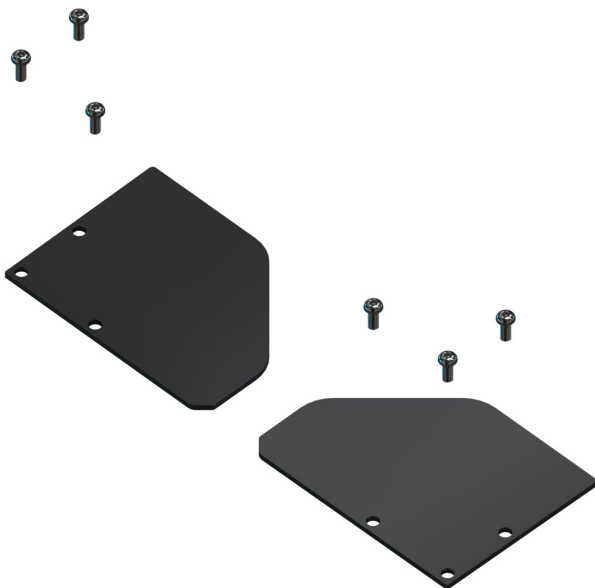
[/en/advertising-systems/mbt-wl129/](#)

5: Fixing the cable loop



Attach the steel cable loop to the screw provided at the top on the opposite side from the winch.

Let the steel cable hang down loosely and fasten the cover to the guide profile with the enclosed screws.

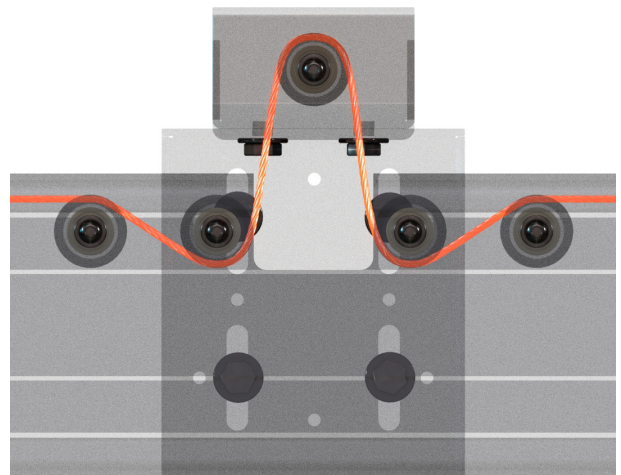


6: Threading the steel cable



Guide the steel cable over the pulleys of the first slide.

System with more than 5 m width:



Guide the steel cable over the pulleys of the center stabilizer and the center console as shown.

MBT-WL129 : Installation guide

</en/advertising-systems/mbt-wl129/>

All systems:



Guide the wire rope over the pulleys of the second slide on the remaining side of the cross profile as shown below. Guide the rope over the pulley through the channel to the crank system.



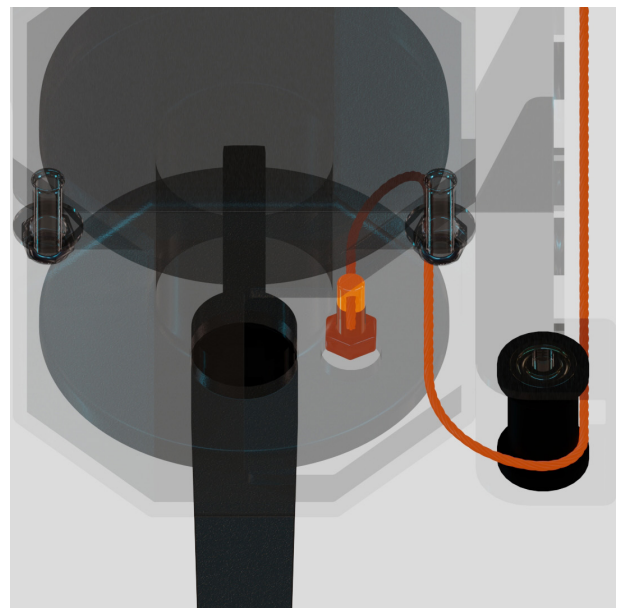
Now fix the remaining cover onto the guide rail with the enclosed screws, as you did before.

Important note

It is essential to observe the illustrations and the correct cable routing.

The correct touring cable routing is essential for the system to function properly.

7: Fasten the cable in the spool



Befestigen Sie nun das Ende des Drahtseiles in der Klemmvorrichtung der Seilwinde des Kurbelsystemes.

MBT-WL129 : Installation guide

</en/advertising-systems/mbt-wl129/>

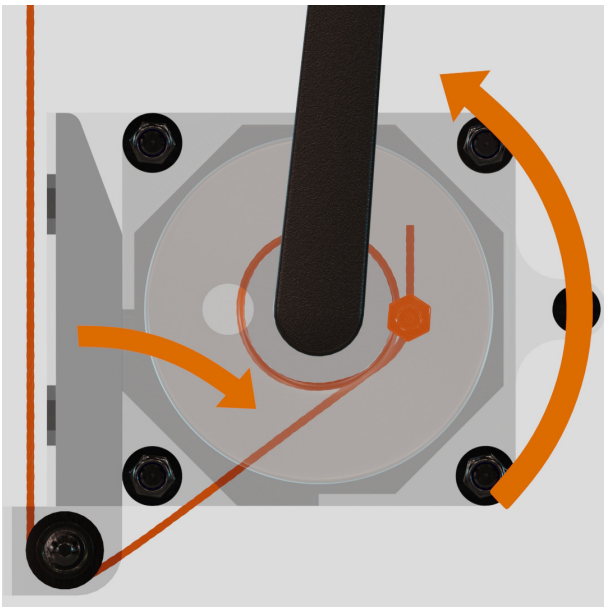
Important note

Pay attention to the correct threading in the bobbin as shown in the illustration.

Secure the wire rope by tightening the nut through the hole on the front of the crankcase.

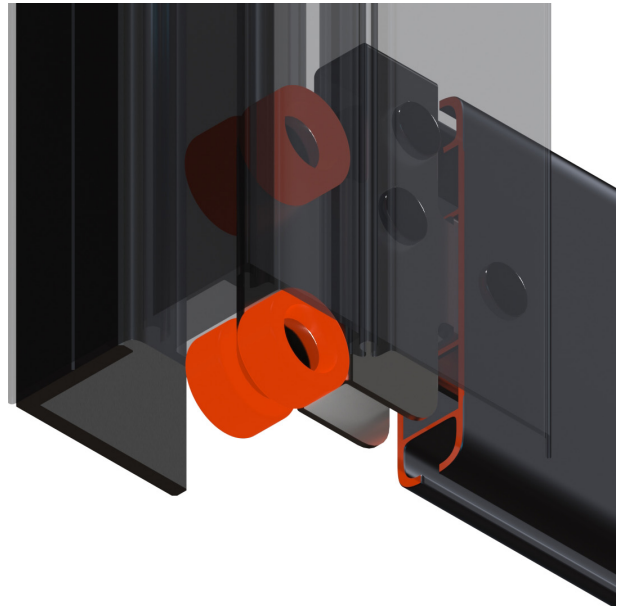
8: Inserting the upper transverse profile

Roll up the steel cable on the spool by operating the crank as displayed.



Move the crank in the direction in which the angle of the wire cable to itself is as large as possible when winding or unwinding.

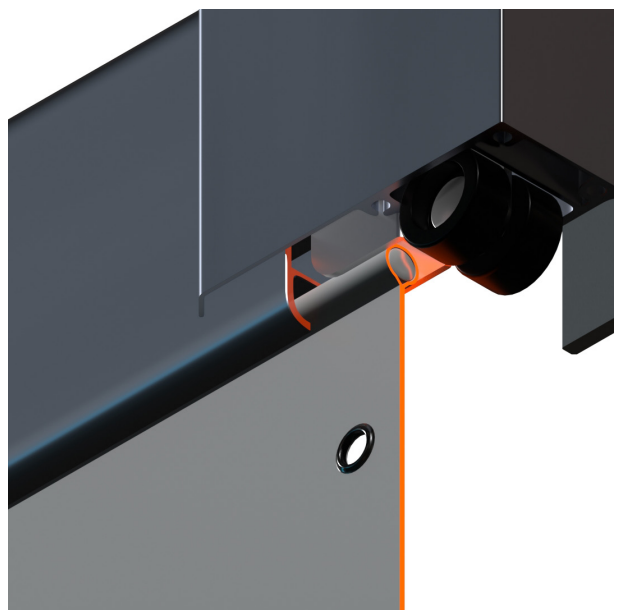
Carry out this process until the rollers of the plug-in carriage are within the guide channels of the guide rails.



9: Pulling up the banner

Moving the banner into your system consists of three steps.

9a: Inserting the upper pole



MBT-WL129 : Installation guide

</en/advertising-systems/mbt-wl129/>

Put the upper pole of the banner into the lower tunnel of the transverse profile which you set up before into the guide profiles.

Please pay attention to the banner pointing with the printed surface to the correct orientation.

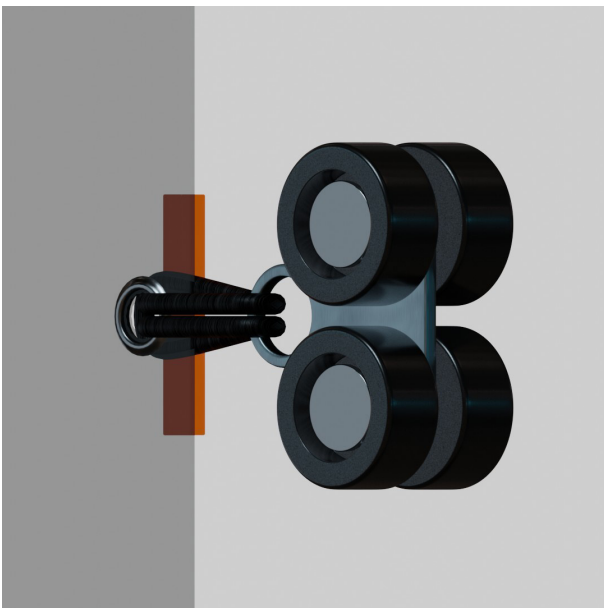
Use the crank until the first grommets are located approximately on hand width below the lower system edge.

the elastic straps are behind the banner and point towards the wall. Now operate the hand crank again and pull in the advertising banner piece by piece.

Guide the roller slides into the guide channel of the guide rails while you continue to crank.

Repeat the process until the lower rollers of the lowest roller carriages are completely in the guide channels.

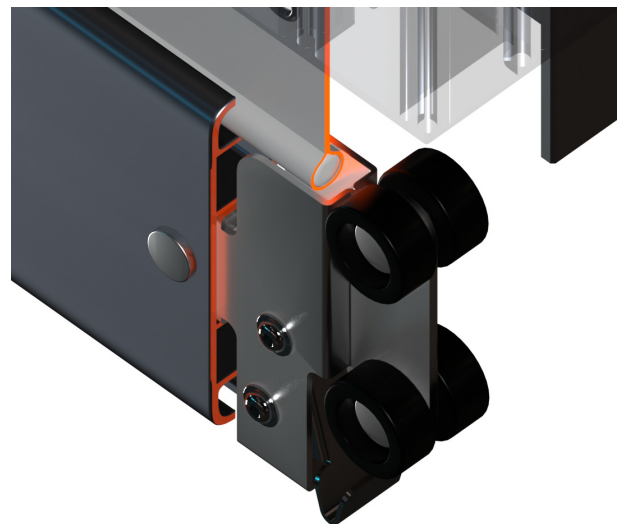
9b: Attach banner-carriages



Use the elastic bands to attach the roller sled to the eyelets of the advertising banner along the entire length, on both sides of the banner.

Make sure that the plastic brackets of

9c: Attach lower transverse profile



Now pull the lower transverse profile over the exposed pole of the advertising banner.

Make sure that the brake for the lower

MBT-WL129 : Installation guide

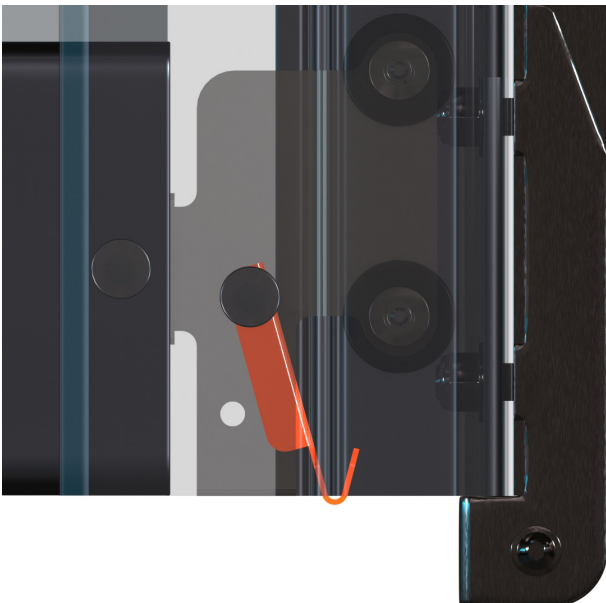
</en/advertising-systems/mbt-wl129/>

transverse profile points downwards as in the illustration and that you position it correctly manually.

Turn the crank again and guide the rollers of the slide-in carriages into the guide channels of the guide profiles.

10: Mounting the brake

The brake should sit on the inner lower edge of the slotted guide channel of the guide rail.



10a: Systems with profile extensions

In systems with profile extensions, the brake is attached to steel cables with the help of wire rope holders.

Attach the brakes, as visible on the follo-

wing illustrations, in the lower carriages of the lower horizontal profile before you raise the banner entirely.

Attach, as soon as the banner has the right position to do so, the brakes in the lower guide channels of the guide profiles, on the open inner profile side.

You can modify the brake position, pushing down the cylinder on the top of the wire rope holder. Once the cylinder snaps back, the steel cable is blocked again.



MBT-WL129 : Installation guide

</en/advertising-systems/mbt-wl129/>



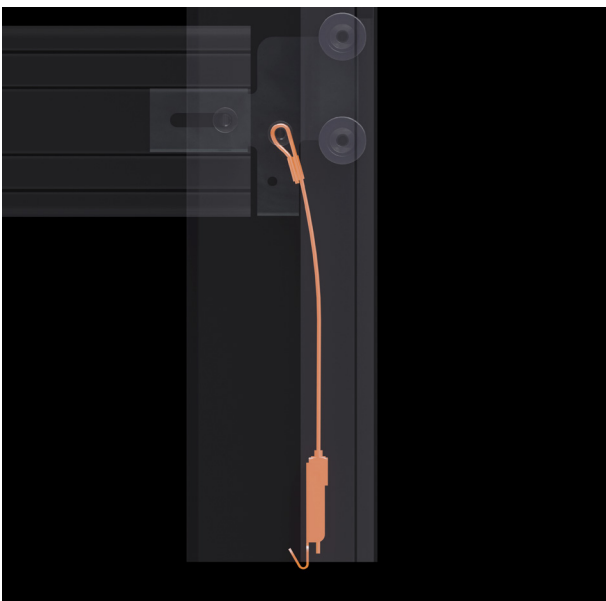
Remove the crank and keep it safely for future use.

The MBT-WL129 is now fully mounted.



Important note

The advertising banner should be removed from the system in the case of storm or other severe weather warnings to avoid damage to the system and building.



11: Tensioning the banner

Tension the banner, as soon as the brakes are positioned, by turning the crank of the winch system until the banner sits correctly and smoothly in its place.